

CHEROKEE
— AUTHENTIC —
WORKWEAR

ORIGINALS

Classics You Can Count On

Our original scrubs are still as popular as ever. They're strong, stylish, and as dependable as you are.



DURABLE



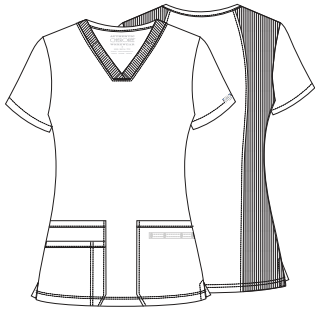
SOIL RELEASE



EASY CARE



Model is wearing: **WW645** V-Neck
Top in Navy (NAVW)



WW645
V-Neck Top

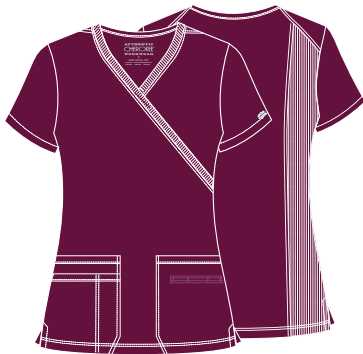
XXS-5XL (27")

Fabric
65 Poly/35 Cotton
Poplin w/Soil Release
White: 55 Cotton/45
Poly Poplin

Product Details

- Contemporary fit
- Right pocket with exterior pocket and pen slot
- Left pocket with hidden instrument loops
- Rib-knit back panels
- Side vents

Available Colors



WW650
Mock Wrap Top

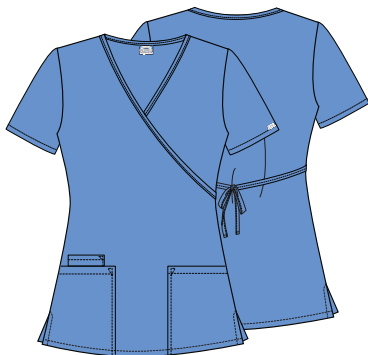
XXS-5XL (26")

Fabric
65 Poly/35 Cotton
Poplin w/Soil Release
White: 55 Cotton/45
Poly Poplin

Product Details

- Contemporary fit
- Right pocket with exterior pocket and pen slot
- Left pocket with hidden instrument loops
- Rib-knit back side panels
- Side vents

Available Colors



4801
Mock Wrap Tunic

XXS-5XL (28½")

Fabric
65 Poly/35 Cotton
Poplin w/Soil Release
White: 55 Cotton/45
Poly Poplin

Product Details

- Traditional Classic fit
- Two patch pockets
- Cellphone pocket
- Tie-back detail
- Side vents

Available Colors



4746
V-Neck Top

XXS-5XL (26")

Fabric
65 Poly/35 Cotton
Poplin w/Soil Release
White: 55 Cotton/45
Poly Poplin

Product Details

- Modern Classic fit
- Curved front yoke
- Patch pockets
- Cellphone pocket
- Short sleeves with notched cuffs
- Front princess seams
- Half-back elastic
- Side vents

Available Colors





CHEROKEE
AUTHENTIC
WORKWEAR

ORIGINALS



4824
Round Neck Top

XS-3XL (26")

Fabric
65 Poly/35 Cotton
Poplin w/Soil Release
White: 55 Cotton/
45 Poly Poplin

Product Details

- Modern Classic fit
- Four pockets: patch pockets, cellphone pocket, hidden hook-and-loop security pocket
- Stitch-detailed neckline
- Curved front yokes
- Back elastic
- Side vents

Available Colors



4770
Snap Front V-Neck Top

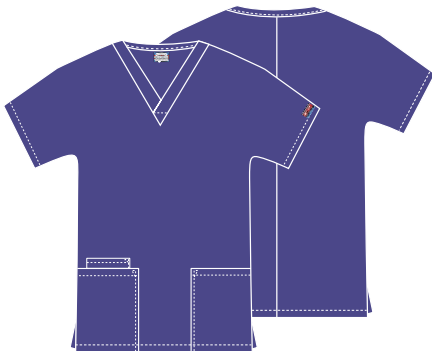
XXS-5XL (26½")

Fabric
65 Poly/35 Cotton
Poplin w/Soil Release
White: 55 Cotton/
45 Poly Poplin

Product Details

- Traditional Classic fit
- Snap front closure
- Two patch pockets
- Cellphone pocket
- Side vents

Available Colors



4700
V-Neck Top

XXS-5XL (26½")

Black comes in 6XL

Fabric
65 Poly/35 Cotton
Poplin w/Soil Release
White: 55 Cotton/
45 Poly Poplin

Product Details

- Traditional Classic fit
- Two patch pockets
- Cellphone pocket
- Short dolman sleeves
- Side vents

Available Colors



* Comes in 6XL



4881
Long Sleeve Underscrub Knit Tee

XS-2XL (26")

Fabric
95 Rayon/
5 Spandex Knit

Product Details

- Modern Classic fit
- Crew neck
- Wear layered or on its own

Available Colors





4350
Snap Front Warm-up Jacket

XXS-5XL (27½")

Fabric
65 Poly/35 Cotton
Poplin w/Soil Release
White: 55 Cotton/
45 Poly Poplin

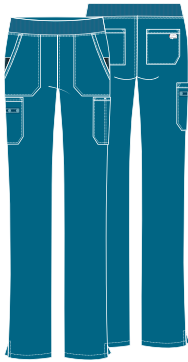
Product Details

- Traditional Classic fit
- Snap front closure
- Two patch pockets
- Cellphone pocket
- Knit cuffs

Available Colors



WOMEN'S PANTS



WW210/P/T
Mid Rise Pull-on Cargo Pant

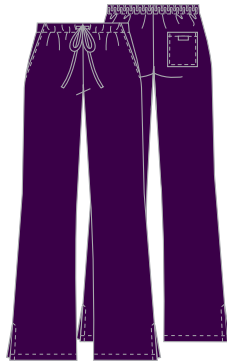
XXS-5XL (31")
[P] XXS-2XL (28½")
[T] XS-2XL (34")

Fabric
65 Poly/35 Cotton
Poplin w/Soil Release
White: 55 Cotton/
45 Poly Poplin

Product Details

- Contemporary fit
- Elastic-reinforced rib-knit waistband
- Front sag-proof expandable patch pockets
- Cargo and back pockets
- Hidden instrument loops
- Side vents
- Straight leg, 17½" opening

Available Colors



4101/P/T
Natural Rise Drawstring Pant

XXS-3XL (31")
[P] XXS-2XL (28½")
[T] XXS-3XL (34")

Fabric
65 Poly/35 Cotton
Poplin w/Soil Release
White: 55 Cotton/
45 Poly Poplin

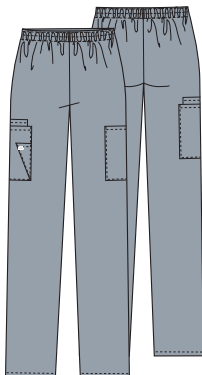
Product Details

- Modern Classic fit
- Elastic back waistband
- Adjustable front drawstring
- Slash pockets
- Back patch pocket
- Side vents
- Flare leg, 20½" opening

Available Colors



*[T] XS-2XL



4200/P/T
Natural Rise Pull-on Cargo Pant

XS-5XL (30")
[P] XS-3XL (27½")
[T] XS-2XL (33")

Fabric
65 Poly/35 Cotton
Poplin w/Soil Release
White: 55 Cotton/
45 Poly Poplin

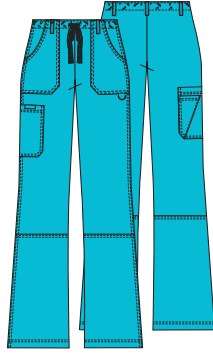
Product Details

- Traditional Classic fit
- Elastic waistband
- Two cargo pockets
- Cellphone pocket
- Scissors pocket
- Tapered leg, 15" opening

Available Colors



*No Tall



4020/P/T
Drawstring Cargo Pant

XXS-2XL (31")
[P] XXS-XL (28½")
[T] XS-XL (34")

Fabric
65 Poly/35 Cotton
Poplin w/Soil Release
White: 55 Cotton/
45 Poly Poplin

Product Details

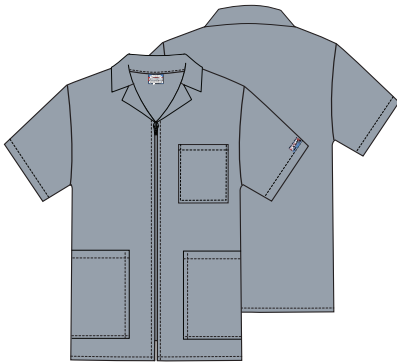
- Modern Classic fit
- Lower rise
- Elastic waistband with webbed drawstring
- Five belt loops
- Front pockets with left D-ring
- Right cargo pocket with scissors pocket
- Double-needle topstitching
- Straight leg, 19½" opening

Available Colors



†Reg. XXS-3XL
* No Tall

MEN'S STYLES



4300
Men's Zip Front Jacket

S-5XL (30½")

Fabric
65 Poly/35 Cotton
Poplin w/Soil Release
White: 55 Cotton/
45 Poly Poplin

Product Details

- Men's fit
- Chest pocket
- Two patch pockets
- Notched lapel collar

Available Colors



4789
Men's V-Neck Top

S-5XL (29")

Fabric
65 Poly/35 Cotton
Poplin w/Soil Release

Product Details

- Men's fit
- Chest pocket with bartacked pen slot
- Double-needle topstitching
- Back yoke
- Side vents

Available Colors



4000/S/T
Men's Fly Front Cargo Pant

S-5XL (31")
[S] S-3XL (28½")
[T] S-2XL (36")

Fabric
65 Poly/35 Cotton
Poplin w/Soil Release
White: 55 Cotton/
45 Poly Poplin

Product Details

- Men's fit
- Elastic waistband with webbed drawstring
- Zip fly front closure
- Seven pockets: double cargo pockets, slash pockets, back pocket
- Tapered leg, 18" opening

Available Colors



†No Short

UNISEX STYLES



4876
Unisex V-Neck Top

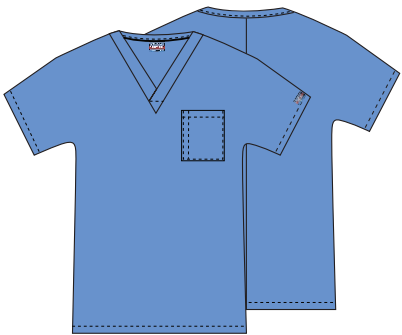
XXS-5XL (29")

Fabric
65 Poly/35 Cotton
Poplin w/Soil Release
White: 55 Cotton/
45 Poly Poplin

Product Details

- Unisex fit
- Chest pocket
- Two patch pockets
- Side vents

Available Colors



4777
Unisex V-Neck Tunic

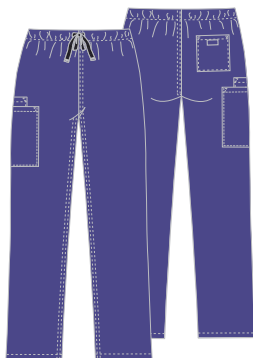
XXS-5XL (27½")

Fabric
65 Poly/35 Cotton
Poplin w/Soil Release
White: 55 Cotton/
45 Poly Poplin

Product Details

- Unisex fit
- Chest pocket with pen slot
- Dolman sleeves

Available Colors



4100/S/T
Unisex Drawstring Cargo Pant

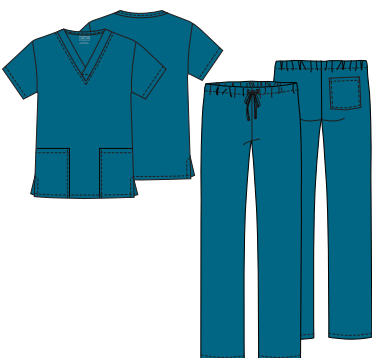
XXS-5XL (31")
[S] XS-3XL (28½")
[T] S-2XL (34")

Fabric
65 Poly/35 Cotton
Poplin w/Soil Release
White: 55 Cotton/
45 Poly Poplin

Product Details

- Unisex fit
- Webbed drawstring
- Cargo pocket with inside cellphone pocket
- Back pocket
- Straight leg, 18½" opening

Available Colors



WW530C
Unisex Top and Pant Set

XXS-5XL
(Center back length: 28½"
Inseam: 31")

Fabric
65 Poly/35 Cotton
Poplin w/Soil Release

Product Details

- Unisex fit
- Three pockets: patch pockets, back pocket
- Drawstring waist
- Tapered leg, 18" opening

Available Colors



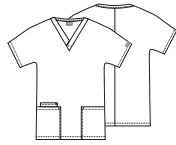


COLOR and STYLE MATRIX

Colors and styles listed in order of popularity.

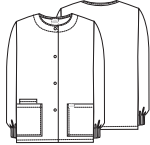
Styles and colors featured are reorderable, and are Poly/Cotton Poplin w/Soil Release (White: Cotton/Poly Poplin) unless otherwise noted.

Center back lengths and inseams are listed in parentheses.



4700
V-Neck Top

XXS-5XL
(26½")



4350
Snap Front Warm-up Jacket

XXS-5XL
(27½")



4881
Long Sleeve Underscrub Knit Tee

XS-2XL
(26")



WW645
V-Neck Top

XXS-5XL
(27")



4770
Snap Front V-Neck Top

XXS-5XL
(26½")



WW650
Mock Wrap Top

XXS-5XL
(26")

WOMEN'S TOPS

Black (BLKW)			[Rayon/Spandex Knit]			
Navy (NAVW)			[Rayon/Spandex Knit]			
Pewter (PWTW)			[Rayon/Spandex Knit]			
Royal (ROYW)			[Rayon/Spandex Knit]			
Wine (WINW)			[Rayon/Spandex Knit]			
Ciel (CIEW)			style not available in this color			
White (WHTW)			[Rayon/Spandex Knit]			
Caribbean Blue (CARW)			[Rayon/Spandex Knit]			
Teal Blue (TLBW)			style not available in this color			
Hunter (HUNW)			style not available in this color			
Galaxy Blue (GABW)			style not available in this color			
Red (REDW)			[Rayon/Spandex Knit]			
Grey (GRYW)			style not available in this color	style not available in this color		style not available in this color
Eggplant (EGGW)			style not available in this color	style not available in this color		style not available in this color
Grape (GRPW)			style not available in this color	style not available in this color		style not available in this color
Khaki (KAKW)			style not available in this color	style not available in this color		style not available in this color
Turquoise (TRQW)			[Rayon/Spandex Knit]	style not available in this color		style not available in this color
Shocking Pink (SHPW)			[Rayon/Spandex Knit]	style not available in this color		style not available in this color
Olive (OLVW)			style not available in this color	style not available in this color		style not available in this color
Surgical Green (SGRW)		style not available in this color	style not available in this color	style not available in this color	style not available in this color	style not available in this color
Orchid (ORCW)		style not available in this color	style not available in this color	style not available in this color	style not available in this color	style not available in this color
Chocolate (CHCW)		style not available in this color	style not available in this color	style not available in this color		style not available in this color
Sage Green (SAGW)		style not available in this color	style not available in this color	style not available in this color	style not available in this color	style not available in this color
Lime Green (LMGW)		style not available in this color	style not available in this color	style not available in this color	style not available in this color	style not available in this color

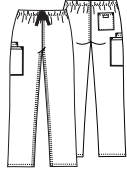


COLOR and STYLE MATRIX

Colors and styles listed in order of popularity.

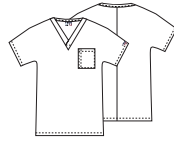
Styles and colors featured are reorderable and are Poly/Cotton Poplin w/Soil Release (White: Cotton/Poly Poplin) unless otherwise noted.

Center back lengths and inseams are listed in parentheses.



4100/S/T
Drawstring
Cargo Pant

XXS-5XL (31")
[S] XS-3XL (28½")
[T] S-2XL (34")



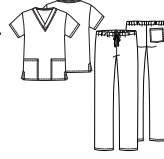
4777
V-Neck
Tunic

XXS-5XL
(27½")



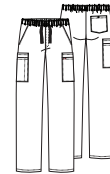
4876
V-Neck
Top

XXS-5XL
(29")



WW530C
Top and
Pant Set

XXS-5XL
(CBL: 28½"
Inseam: 31")



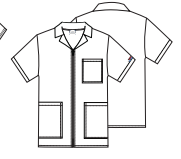
4000/S/T
Fly Front
Cargo Pant

S-5XL (31")
[S] S-3XL (28½")
[T] S-2XL (36")



4789
V-Neck
Top

S-5XL
(29")



4300
Zip Front
Jacket

S-5XL
(30½")

	UNISEX STYLES				MEN'S STYLES		
Black (BLKW)					FT		
Navy (NAVW)					FT		
Pewter (PWTW)					FT		
Royal (ROYW)					FT		
Wine (WINW)					FT	style not available in this color	
Ciel (CIEW)					FT		
Hunter (HUNW)					FT	style not available in this color	
Caribbean Blue (CARW)					FT	style not available in this color	style not available in this color
White (WHTW)						style not available in this color	
Grey (GRYW)				style not available in this color	FT No Short	style not available in this color	
Khaki (KAKW)				style not available in this color		style not available in this color	
Galaxy Blue (GABW)					No Short	style not available in this color	style not available in this color
Teal Blue (TLBW)				style not available in this color	No Short	style not available in this color	style not available in this color
Olive (OLVW)				style not available in this color	No Short	style not available in this color	style not available in this color
Red (REDW)					No Short	style not available in this color	style not available in this color
Grape (GRPW)				style not available in this color	No Short	style not available in this color	style not available in this color
Surgical Green (SGRW)			style not available in this color	style not available in this color	No Short	style not available in this color	style not available in this color
Chocolate (CHCW)				style not available in this color	No Short	style not available in this color	style not available in this color
Eggplant (EGGW)			style not available in this color	style not available in this color	No Short	style not available in this color	style not available in this color
Turquoise (TRQW)			style not available in this color	style not available in this color	style not available in this color	style not available in this color	style not available in this color
Shocking Pink (SHPW)			style not available in this color	style not available in this color	style not available in this color	style not available in this color	style not available in this color